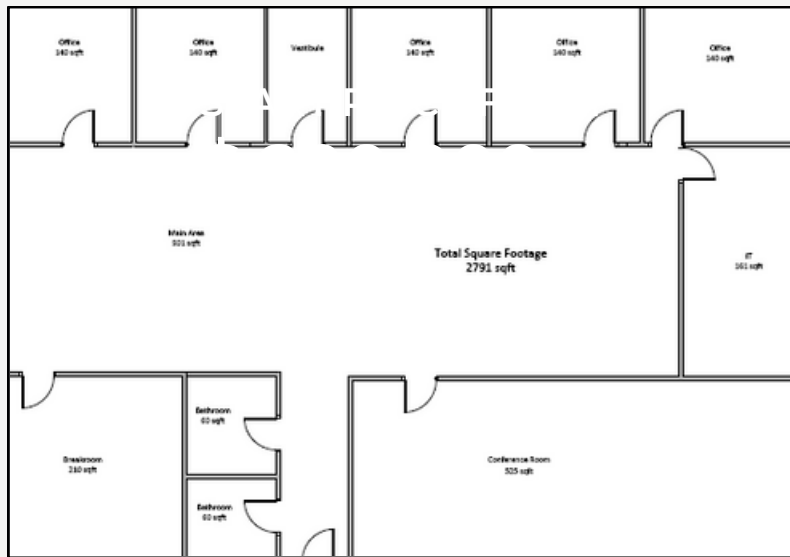


FOR LEASE

OFFICE SPACE AVAILABLE AT TERMINAL ONE



Features

- Six Private Offices
- 900 Square Feet of Cubicles in Main Area
- Kitchen & Breakroom
- Large Conference Room
- Two Restrooms
- Ample Parking



More Information

541-267-7678

ForLease@portofcoosbay.com